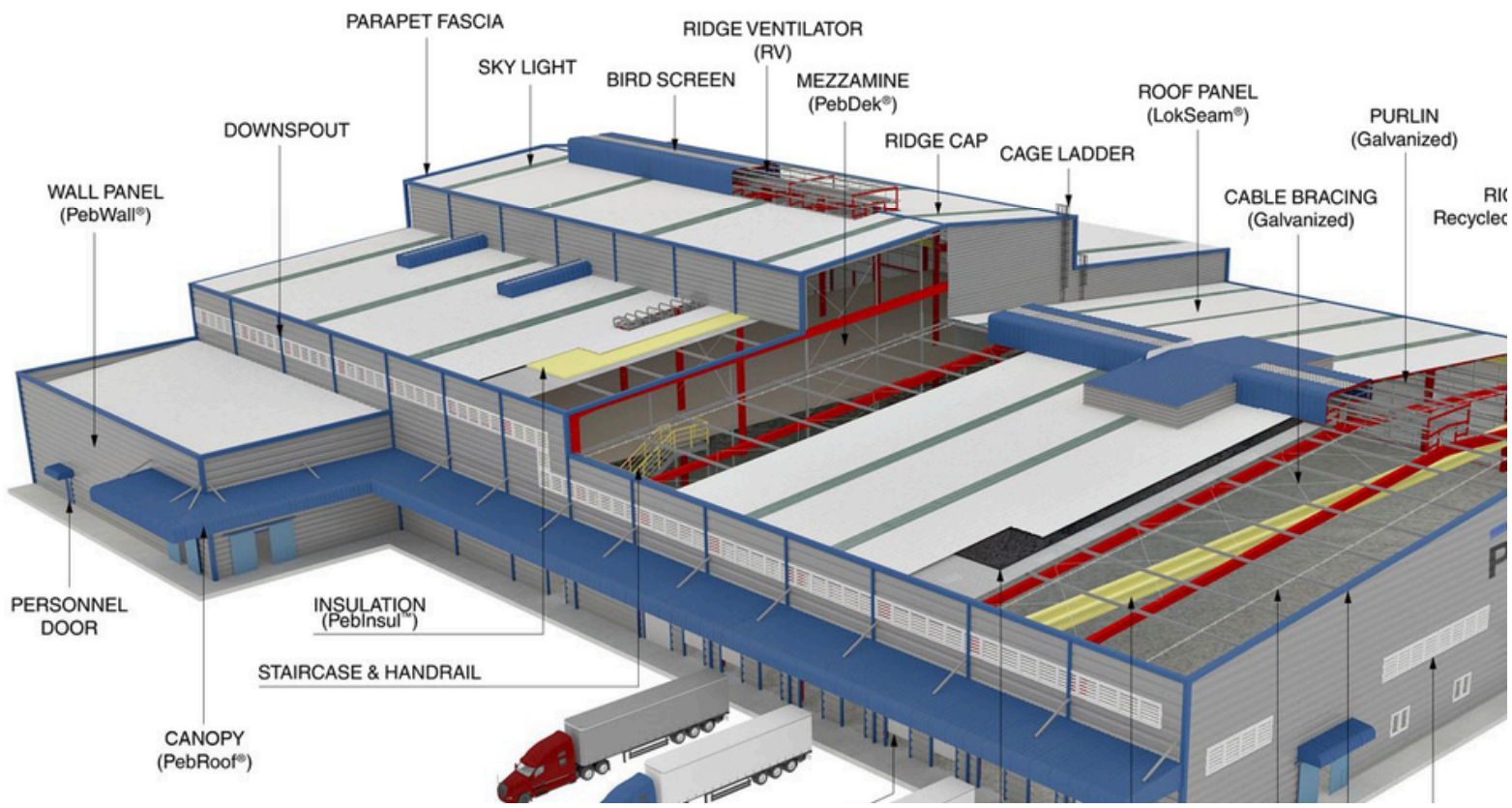




# Shree Ram Enterprises

## PRE - ENGINEERED BUILDINGS AND STRUCTURAL STEEL SOLUTIONS



# Introduction

---

## PEB Structure

SHREE RAM ENTERPRISES is a pioneer & leader in Manufacturing of Quality Pre-Engineered Steel Building industry in Ghaziabad, UP. We are well-established Manufacturer of infrastructure department installed with advance technology and machines assist with us in manufacturing Pre-Engineered Building (PEB) Structure in Ghaziabad, UP.

We are leading Manufacturer of an optimum quality range of PEB structure, Industrial Shed, Hi-Rib Roofing sheets, deck sheets, tile profile sheets, GS Sheets, H-Beam fabricated and C/Z purlins etc. We provides a high quality of Roofing & Cladding Profiles sCladding Sheets, Purlins from high quality raw materials as per customer requirements.

---

We deal in PEB structure, factory and warehouses. In the past seven years Pre-engineered Building industry outlook has under gone a sea change and has witnessed a boom in this sector.

Now this technology is used in many sectors like in multistorey buildings, malls, schools, airports We are proud of our strategic achievement as a leading player in the local area and as an important supplier and manufacturer of Deck Sheets, Steel Structure and Roofing solution etc.

SHREE RAM ENTERPRISES Pre-engineering Building Solutions ensure a unique blend of advantages:

- Fast completion of projects
- Cost effective solution
- Factory-controlled quality
- Maintenance free solution
- Upto 90 M clear space
- Flexibility in expansion
- Energy efficient roof and wall system



# **ABOUT US**

Founded in the year 2015 at Ghaziabad (Uttar Pradesh, India), we “Shree Ram Enterprises ” are a Sole Proprietorship (Individual) Firm, recognized as the most reputed Manufacturer and Service provider of the best quality Roofing Sheets, Deck Sheet, hr Purlin . GI Purlin ,Puf Sheet, Polycarbonet Sheet Turbo Ventilator, PEB Building Fabrication Services, etc.

## **VISION**

To apply a Systematic, Innovative & Collaborative Business approach guided by ethics that ensures consistent delivery & satisfaction to customers & clients.

## **Mission**

To create long term value by empowering clients through providing superior services supported by culture based on the highest level of team work, efficiency and integrity.



## **Design services**

Design is a soul of PEB company. It takes experience to know the behavior of structure under different conditions. The difference between makeshift PEB company and a standard PEB company is validation process. Without validation process there are possibilities that structure won't behave in required intent. SRE design team comprises of experienced design validation team which is having range of 10 to 25 years of PEB experience ranging from structural design to detail checking. SRE team powered by most advanced design software tools are capable to design most complex PEB structures and various cladding solutions.

## **Design Team**

- Optimization of geometry & configuration.
- Structural analysis by experienced Engineers with various design codes.
- Structural Design and Drawing.
- Detailed development.
- Proposal Development to express our understanding.

## **Detailing Team**

- Modelling of structure on 3d platform.
- Checking of model by design engineer.
- Detailing for manufacturing unit.
- Detailing and erection drawing validation.

## **Order Management**

SRE lays major emphasis on customer satisfaction by coordinating customer requirement timelines and specifications to manufacturing and erection. Customer satisfaction cannot be achieved without a good OM team.

- PO audit and conversion into technical and financial documentation.
- Coordinating billing and payment flow.
- Coordinating between design team and customer for various changes.

## **Erection Team**

SRE team comprises of most experienced team in handling complex erection activities, without accurate technical erection, design intent and production quality cannot be converted into reality.

## Quality control system

Quality and systems determine the reliability of company and performance of building, SRE infrastructure has created worlds best infrastructure system and trained man power to achieve the desired quality, which makes us top quality adherence company in NCR. The best components are used in all the specifications of the building. Following are the salient feature of SRE quality system.

## Applications

- Warehouse Logistics
- Transport Terminals
- Factory Sheds
- PowerPlant
- Metro Station
- Airport Hangers
- Cold Storage
- Stadiums

## Raw Material QA



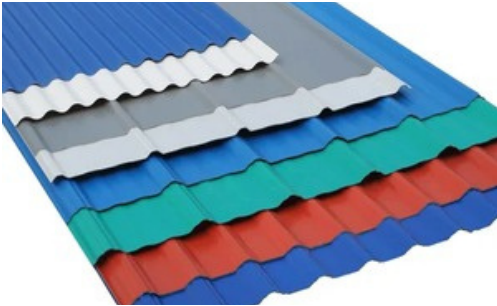
## Fabrication QA



# Sheeting and Accessories

SRE use only galvanometer sheets of 150 AZ in various accessories of roofing, cladding and accessories.

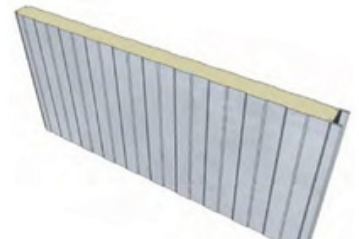
## Roof Profile



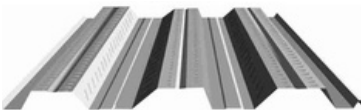
SRE roof & wall cladding system is available in the following base material in standard execution. Galvalume high tensile cold rolled steel as Standard Colors for Roof and Cladding Coating : SMP/Modified Polyester Coating Per AS-1397 standard coating class AZ150gsm/m)2 zinc-aluminium alloy coating mass, total of both sides, 550MPA yield strength confirming to AS-1397 standard.

## Wall Profile

SRE use special wall profile to eliminate dents and increase straightness in profile. Material used are from standard companies like JSW, Tata, Sail ,Jindal and Posco. Wall cladding plays a major role in its aesthetics and SRE ensure best quality material with excellent execution.



## Deck Section



SRE offers deck section in galvanized and galvalume form that is available in customized length.

## Standing Beam



SRE offer standing seam roof system with profile depth of 76 vs 51 mm which provides 20% more strength.

## Accessories



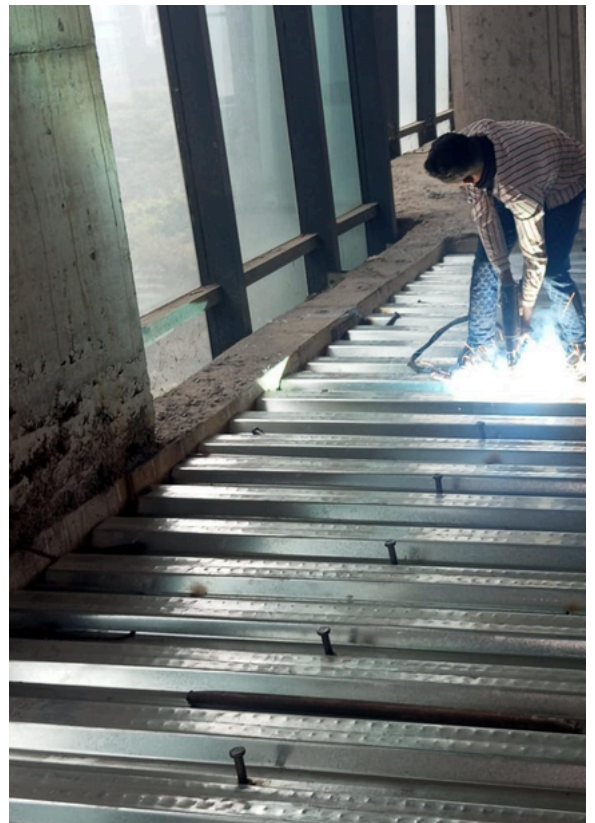
SRE offer ventilation designs to enable temperature reduction and pleasant atmosphere

## Insulation



Glasswool, Bubble and Rockwool Insulation

# OUR PROJECTS





## **Shree Ram Enterprises**

1st Floor, KH No. 17/21, Virandawan  
Colony, Sideul Haridwar

### **Email:**

shreeram.enterprises011911@gmail.com

### **Phone No.:**

Mob:-9992058625, 9456953154

### **Office:**

G-123, Sector 63, Noida,  
G.B. Nagar - 201301

### **Work:**

Kh. No. 842, Shahpur, Bamhaita,  
Shouryapuram, Ghaziabad, U.P.